

PROWLS & GROWLS

*The monthly newsletter for Country Hills Elementary
February 2021*



A Day of Service and Love **#2getherInServiceandLove**



On Sunday, February 14, 2021, Broward County Public Schools and communities across Broward County will host A Day of Service and Love in observance of the three-year commemoration of the 17 lives lost and those injured as a result of the tragedy at Marjory Stoneman Douglas High School on February 14, 2018.

A Day of Service and Love provides an opportunity for students, employees, and volunteers to come together to support each other through a variety of community service activities at our schools and across the county. On this day, our students will reflect and spend the day making beneficial impacts on the lives of others. We want them to know they have the power to positively shape the lives of others. On this day, our students will feel pride at being important contributors to our community as they are surrounded by positive acts by others. Developing positive character traits in our youth is as important as the academic education they receive. We remind ourselves that as adults, we must exemplify what we want to see in our children.

To provide a forum for students, employees and volunteers to serve during the COVID-19 pandemic, we have developed a range of volunteer opportunities to support local efforts while wearing masks and practicing physical distancing during the week of February 8, 2021.



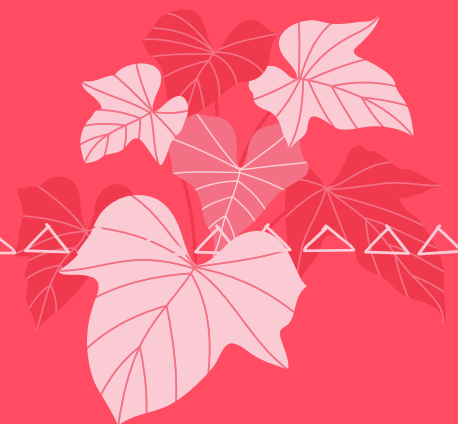
Educating Today's Students to Succeed in Tomorrow's World



- February 1 - Yearbook Pre-Sales Begin
- February 1-5 - National School Counselor's Week
- February 3 - Report Cards available on Virtual Counselor
- February 5 - Wear RED for American Heart Association
- February 8 - Free dinner distribution begins
- February 8-12 - Crayon Initiative
- February 9 - Luv's Donuts PTA Fundraiser
- February 9 - Interim Reports issued
- February 10 - Picture Day
- February 12 - CHE observance of Day of Service and Love
- February 15 - No School - President's Day
- February 18 - Early Release @ 12:10 pm
- February 18 - Pasquale's Pizza PTA Fundraiser
- February 22 - SAC/SAF Meeting @ 3pm
- February 26 - Broward Schools Caliber Awards 6-8 pm

Thank you!

We would like to take this time to thank our School Counselor, Ms. Diana Kay-Berrieum and our District Support Counselor, Ms. Arlene Kall for their dedication to our students and community



FSA TESTING DATES

Writing	Grades 4 & 5	April 6th
Reading	Grade 3	April 6 th & 7th
Reading	Grades 4 & 5	May 4th & 5th
Math	Grades 3, 4, & 5	May 11 th & 12 th
Science	Grade 5	May 18 th & 19th



FEBRUARY 10TH

Online Learners visit our school website to schedule your appointment



Join us February 8-12



Join us by bringing in your used and unwanted crayons! Bins will be placed in each building hallway for collection.

The Crayon Initiative then melts them down and remanufactures them, reducing environmental waste. Better yet, the recycled crayons are distributed to art programs at children's hospitals across the U.S., brightening the lives of young patients during their stay.



FEBRUARY CHARACTER TRAIT



"No legacy is so rich as honesty." - William Shakespeare (1564 - 1616)

Honesty

... Being truthful, trustworthy, and sincere.

ACTIVITY: TRUTH VS. UNTRUTH
Read number 6 under the Honesty Demonstrators list on this page. Write and illustrate a short story defining the meaning of this sentence. If possible share your story as a lesson on honesty with younger children.

ACTIVITY: DRAW A COMIC
Read the comic strips in the *Sun Sentinel*. Are there any characters that demonstrate honesty or dishonesty? Who are they? Which of their actions tell you that they are being honest or dishonest? Explain.

Think about what being honest means to you. Then draw a comic strip that demonstrates your ideas about honesty.

ACTIVITY: TRUTH VS. MYTH
When asked if he chopped down a cherry tree, it has often been stated that our first President, George Washington, answered, "I cannot tell a lie." This statement seems to support the fact that President Washington was a man of great honesty because he admitted his guilt.

As it turns out, this statement is what is known as a myth. Research to discover the answers to the following questions:
 What is a myth?
 In what way does a myth differ from a lie?
 Why do you think myths often become "truth"?
 What purpose does a myth serve?
 Based on the results of your research, explain whether you think it is acceptable to continue repeating this myth about our first President? Explain if you think it is acceptable to continue repeating any myth. Discuss your opinion with your classmates.

Florida Standards: W.1-10, W.11-12, W.13-14, W.15-16, W.17-18, W.19-20, W.21-22, W.23-24, W.25-26, W.27-28, W.29-30, W.31-32, W.33-34, W.35-36, W.37-38, W.39-40, W.41-42, W.43-44, W.45-46, W.47-48, W.49-50, W.51-52, W.53-54, W.55-56, W.57-58, W.59-60, W.61-62, W.63-64, W.65-66, W.67-68, W.69-70, W.71-72, W.73-74, W.75-76, W.77-78, W.79-80, W.81-82, W.83-84, W.85-86, W.87-88, W.89-90, W.91-92, W.93-94, W.95-96, W.97-98, W.99-100, W.101-102, W.103-104, W.105-106, W.107-108, W.109-110, W.111-112, W.113-114, W.115-116, W.117-118, W.119-120, W.121-122, W.123-124, W.125-126, W.127-128, W.129-130, W.131-132, W.133-134, W.135-136, W.137-138, W.139-140, W.141-142, W.143-144, W.145-146, W.147-148, W.149-150, W.151-152, W.153-154, W.155-156, W.157-158, W.159-160, W.161-162, W.163-164, W.165-166, W.167-168, W.169-170, W.171-172, W.173-174, W.175-176, W.177-178, W.179-180, W.181-182, W.183-184, W.185-186, W.187-188, W.189-190, W.191-192, W.193-194, W.195-196, W.197-198, W.199-200, W.201-202, W.203-204, W.205-206, W.207-208, W.209-210, W.211-212, W.213-214, W.215-216, W.217-218, W.219-220, W.221-222, W.223-224, W.225-226, W.227-228, W.229-230, W.231-232, W.233-234, W.235-236, W.237-238, W.239-240, W.241-242, W.243-244, W.245-246, W.247-248, W.249-250, W.251-252, W.253-254, W.255-256, W.257-258, W.259-260, W.261-262, W.263-264, W.265-266, W.267-268, W.269-270, W.271-272, W.273-274, W.275-276, W.277-278, W.279-280, W.281-282, W.283-284, W.285-286, W.287-288, W.289-290, W.291-292, W.293-294, W.295-296, W.297-298, W.299-300, W.301-302, W.303-304, W.305-306, W.307-308, W.309-310, W.311-312, W.313-314, W.315-316, W.317-318, W.319-320, W.321-322, W.323-324, W.325-326, W.327-328, W.329-330, W.331-332, W.333-334, W.335-336, W.337-338, W.339-340, W.341-342, W.343-344, W.345-346, W.347-348, W.349-350, W.351-352, W.353-354, W.355-356, W.357-358, W.359-360, W.361-362, W.363-364, W.365-366, W.367-368, W.369-370, W.371-372, W.373-374, W.375-376, W.377-378, W.379-380, W.381-382, W.383-384, W.385-386, W.387-388, W.389-390, W.391-392, W.393-394, W.395-396, W.397-398, W.399-400, W.401-402, W.403-404, W.405-406, W.407-408, W.409-410, W.411-412, W.413-414, W.415-416, W.417-418, W.419-420, W.421-422, W.423-424, W.425-426, W.427-428, W.429-430, W.431-432, W.433-434, W.435-436, W.437-438, W.439-440, W.441-442, W.443-444, W.445-446, W.447-448, W.449-450, W.451-452, W.453-454, W.455-456, W.457-458, W.459-460, W.461-462, W.463-464, W.465-466, W.467-468, W.469-470, W.471-472, W.473-474, W.475-476, W.477-478, W.479-480, W.481-482, W.483-484, W.485-486, W.487-488, W.489-490, W.491-492, W.493-494, W.495-496, W.497-498, W.499-500, W.501-502, W.503-504, W.505-506, W.507-508, W.509-510, W.511-512, W.513-514, W.515-516, W.517-518, W.519-520, W.521-522, W.523-524, W.525-526, W.527-528, W.529-530, W.531-532, W.533-534, W.535-536, W.537-538, W.539-540, W.541-542, W.543-544, W.545-546, W.547-548, W.549-550, W.551-552, W.553-554, W.555-556, W.557-558, W.559-560, W.561-562, W.563-564, W.565-566, W.567-568, W.569-570, W.571-572, W.573-574, W.575-576, W.577-578, W.579-580, W.581-582, W.583-584, W.585-586, W.587-588, W.589-590, W.591-592, W.593-594, W.595-596, W.597-598, W.599-600, W.601-602, W.603-604, W.605-606, W.607-608, W.609-610, W.611-612, W.613-614, W.615-616, W.617-618, W.619-620, W.621-622, W.623-624, W.625-626, W.627-628, W.629-630, W.631-632, W.633-634, W.635-636, W.637-638, W.639-640, W.641-642, W.643-644, W.645-646, W.647-648, W.649-650, W.651-652, W.653-654, W.655-656, W.657-658, W.659-660, W.661-662, W.663-664, W.665-666, W.667-668, W.669-670, W.671-672, W.673-674, W.675-676, W.677-678, W.679-680, W.681-682, W.683-684, W.685-686, W.687-688, W.689-690, W.691-692, W.693-694, W.695-696, W.697-698, W.699-700, W.701-702, W.703-704, W.705-706, W.707-708, W.709-710, W.711-712, W.713-714, W.715-716, W.717-718, W.719-720, W.721-722, W.723-724, W.725-726, W.727-728, W.729-730, W.731-732, W.733-734, W.735-736, W.737-738, W.739-740, W.741-742, W.743-744, W.745-746, W.747-748, W.749-750, W.751-752, W.753-754, W.755-756, W.757-758, W.759-760, W.761-762, W.763-764, W.765-766, W.767-768, W.769-770, W.771-772, W.773-774, W.775-776, W.777-778, W.779-780, W.781-782, W.783-784, W.785-786, W.787-788, W.789-790, W.791-792, W.793-794, W.795-796, W.797-798, W.799-800, W.801-802, W.803-804, W.805-806, W.807-808, W.809-810, W.811-812, W.813-814, W.815-816, W.817-818, W.819-820, W.821-822, W.823-824, W.825-826, W.827-828, W.829-830, W.831-832, W.833-834, W.835-836, W.837-838, W.839-840, W.841-842, W.843-844, W.845-846, W.847-848, W.849-850, W.851-852, W.853-854, W.855-856, W.857-858, W.859-860, W.861-862, W.863-864, W.865-866, W.867-868, W.869-870, W.871-872, W.873-874, W.875-876, W.877-878, W.879-880, W.881-882, W.883-884, W.885-886, W.887-888, W.889-890, W.891-892, W.893-894, W.895-896, W.897-898, W.899-900, W.901-902, W.903-904, W.905-906, W.907-908, W.909-910, W.911-912, W.913-914, W.915-916, W.917-918, W.919-920, W.921-922, W.923-924, W.925-926, W.927-928, W.929-930, W.931-932, W.933-934, W.935-936, W.937-938, W.939-940, W.941-942, W.943-944, W.945-946, W.947-948, W.949-950, W.951-952, W.953-954, W.955-956, W.957-958, W.959-960, W.961-962, W.963-964, W.965-966, W.967-968, W.969-970, W.971-972, W.973-974, W.975-976, W.977-978, W.979-980, W.981-982, W.983-984, W.985-986, W.987-988, W.989-990, W.991-992, W.993-994, W.995-996, W.997-998, W.999-1000.

"The food closest to nature is the best."

Free mobile phone apps available for download on Apple's App Store and Google's Play Store.

SAFERWATCH

SaferWatch app is supported by the Broward Sheriff's Office and allows individuals in Broward County the ability to communicate with law enforcement seamlessly and report potential threats and suspicious activity. Visit <https://www.saferwatchapp.com> for more information.

FORTIFYFL

FortifyFL allows individuals to instantly report suspicious activity to appropriate law enforcement agencies and school officials. For more information about the FortifyFL app, visit <https://www.getfortifyfl.com/>.



Important Update



School Policies

Student Placement/Teacher Request Policy

As we begin to plan for the 2021-2022 school year, we would like to make you aware of our student placement policy for forming classes.

Parents have this opportunity to provide information regarding their child and any special circumstance that might need to be considered. We ask that you carefully read this information and make a note of the deadline for submitting your letter, if you choose to do so. Only letters that have followed the guidelines below will be considered.

Country Hills Elementary School Student Placement Policy

Student placement letters are neither encouraged nor discouraged but provide parents a means of expressing special circumstances that might need to be considered. Student placement is taken seriously and is initiated according to a process involving time and careful thought concerning the best interest of every child in each classroom. In order to create balanced classes of students, the following factors are considered: gender, ethnicity, ability levels, student needs, behavior concerns, and special program needs. Please note that the final decision on all student placements rests with the administration. In order for letters to be considered, please submit to **Ms. Ortega by May 7, 2021**. Students will be notified prior to the start of school regarding class placement.

ACCEPTABLE LETTERS INCLUDE:

- Issues relating to learning disabilities will be considered (testing from a psychologist and/or doctor diagnosis required and test results on file in the student's permanent record).
- Issues relating to medical need or physical impairment will be considered. (Documentation required in health room records).
- Emotional issues which dramatically impact the learning environment will be considered.
- Requests for a particular teaching style that would best match your child's learning style.
- Parents of multiples (twins, triplets, etc.) may submit requests to have their children together in the same class.

LETTERS WHICH WILL NOT BE CONSIDERED:

(Letters will be discarded.)

- Requesting a teacher by name.
- Requesting that two students be placed in the same class unless there is a documented, valid need for special consideration.
- Requesting an "experienced" teacher or "specific teacher". We understand that student success depends heavily upon the classroom environment and the relationship between the teacher and student, along with the student responsibilities of being respectful, responsible, safe, and ready to learn. All of our teachers are dedicated, hard-working, and committed to growth.

**Although we will do our best to place students accordingly,
we cannot guarantee any class placement.**

Attention Students and Parents!

HOMWORK SUPPORT FOR BCPS K-12 STUDENTS

Free, Live and Exclusive Homework Help from Certified Teachers and Subject Matter Experts
Available Mondays-Thursdays on School Days!

Rave Reviews for Ask BRIA

"To me, this is the absolute best version of tutoring possible during these unprecedented times. It highlights how our district is coming together to help our students the best way we know how."

Literacy Coach Melissa Cabrera

"When I heard about Ask BRIA I didn't want to join because I thought I'd be seen as dumb. I thought "why would someone need help with homework if they're smart?" I was having trouble with my Algebra 1 Honors course, so I joined the 8th grade math Teams meeting. I was skeptical at first, but the teacher helped me with the problem I was having and even called me smart for catching on quick. My experience with Ask BRIA was great! I recommend it - it's a ten out of ten!"

Middle School Student, Justin E.

"I think it's awesome that BCPS is offering a free tutoring service...It's giving kids quick and easy access to get help at the click of a button after school if they find they're really struggling with the day's lesson."

High School Senior William B.

Elementary (Grades K-5) Students:
Homework support available Mondays to Thursdays
from 3:15 to 7:15 p.m.

1. Login into SSO/Canvas and click on the Ask BRIA link.
2. Complete and submit a request form.
3. Open Microsoft Teams and wait for a call from Ask BRIA for a one-on-one session with a certified teacher.

Subjects: English Language Arts, Math, Science, Social Studies and more!

Secondary (Grades 6-12) Students:
Homework support available Mondays to Thursdays
from 3:30 to 8:30 p.m.

1. Login into SSO/Canvas and click the Ask BRIA link in your Canvas course or the tile on your Clever Launchpad.
2. On the Ask BRIA landing page, scroll down to select school level and then select region for your school.
3. Choose subject you need help with and wait in the lobby of the Teams meeting until an Ask BRIA teacher lets you in to help you with your assignment.

Subjects: English Language Arts, Math, Science, Social Studies, AP/Honors, Cambridge International and more!



**ASK
BRIA**

BROWARD REMOTE INSTRUCTIONAL ASSISTANT



Join us and wear red on.

F R I D A Y
FEB • 5 • 2021
AMERICAN
HEART
ASSOCIATION



IN CELEBRATION OF
GO RED

★ **FOR WOMEN** ★
AWARENESS MOVEMENT



The School Board of Broward County, Florida Dr. Rosalind Osgood, Chair • Laurie Rich Levinson, Vice Chair • Lori Allhadeff • Patricia Good • Debra Hixon • Donna P. Korn • Sarah Leonardi • Ann Murray • Nora Rupert • Robert W. Runcie, Superintendent of Schools

The School Board of Broward County, Florida, prohibits any policy or procedure which results in discrimination on the basis of age, color, disability, gender identity, gender expression, genetic information, marital status, national origin, race, religion, sex or sexual orientation. The School Board also provides equal access to the Boy Scouts and other designated youth groups. Individuals who wish to file a discrimination and/or harassment complaint may call the Director, Equal Educational Opportunities/ADA Compliance Department & District's Equity Coordinator/Title IX Coordinator at 754-321-2150 or Teletype Machine (TTY) 754-321-2158. Individuals with disabilities requesting accommodations under the Americans with Disabilities Act Amendments Act of 2008, (ADAAA) may call Equal Educational Opportunities/ADA Compliance Department at 754-321-2150 or Teletype Machine (TTY) 754-321-2158. browardschools.com

CHE YEARBOOKS NOW ON SALE!!!

ORDER YOURS TODAY AND START UPLOADING YOUR PICTURES!

Use Google Chrome
for best results!



UPLOAD YOUR PHOTOS

Please help us create the best yearbook ever!
Upload your pictures that you take around
school and at school events.
It's easy! Just follow the steps below.

Go to Pictavo Community at
commpe.pictavo.com

Find your school

Enter information

Verify Email and Login

Click or tap 'Upload Photos'

Select the images to upload

Choose an album

Add date information (if you want)

Click or tap 'Upload Photos'



PURCHASE LOVE LINES

Short messages to your children printed
in the yearbook.

Up to 20 Words - \$5

21-30 Words - \$10 • 30 -50 Words - \$20

ORDER YOUR YEARBOOK NOW ONLY \$30!

Price will increase to \$35 on March 12, 2021.

Online purchases only at
commpe.pictavo.com

Find your school

Click or tap 'Shop My School'

Find your product & 'Add to Cart'

Enter student information

'Add to Cart' & 'Check Out'
to complete your purchase!



PURCHASE & DESIGN YOUR YEARBOOK AD

Space is limited so make sure to reserve
your ad today!

FULL PAGE AD - \$150 QUARTER PAGE AD - \$45
HALF PAGE AD - \$75 EIGHTH PAGE AD - \$30

Find your school

Select 'Shop My School'

Find your product & 'Add to Cart'

'Create Account'

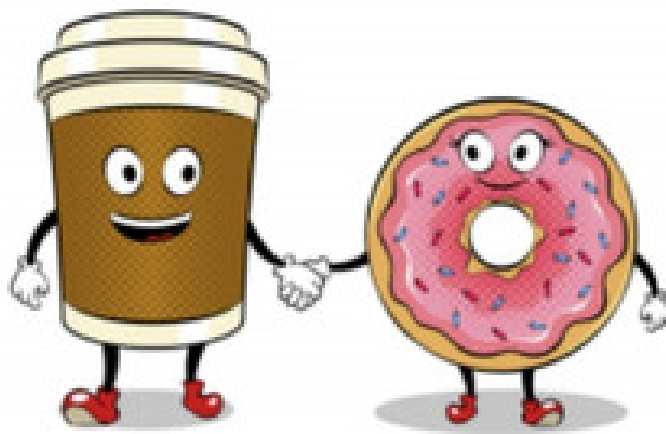
Verify Email

'Add to Cart' & 'Check Out'
to complete your purchase.

Head to 'My Stuff' to
design and submit your
masterpiece!



Any questions or if you need help email cheptayearbook@gmail.com



Luv's Donuts & Stuff

Pick-Up Only

TUESDAY, 2/9

6:00AM - 2:30PM

7893 W SAMPLE RD

954-866-9916

CHE PTA GIVE BACK

PASQUALE & SONS' PIZZA COMPANY

THURSDAY, 2/18

11:30AM - 9:00PM

5609 CORAL RIDGE DR

954-510-0707

Take-out and Dine-in ONLY

15% Give Back

